



2024 Pricing

***Purchase your student computer through the NHS 1-to-1 program!***

Newburyport High School

---

**Lease-to-Own Device Program**

---

# 2024 Lease-to-Own Package

*Invest in an educational tool designed to enhance teaching and learning!*



- \* Apple iPad Air M1
- \* Logitech Keyboard Case with Trackpad
- \* AppleCare+ for Schools
- \* Apple Pencil 2nd Gen

# 2024 Student Device Specifications

## Pricing

By purchasing the device through NPS, families are able to take advantage of competitive educational pricing and an extended insurance product.



## AppleCare+ Insurance

The student device package includes **4 years of AppleCare+ Insurance**.

This insurance plan is only available through schools and remains active for 4 years.

All devices purchased through NPS will be serviced through the District Technology Office—you will not need to go to an Apple store.

The insurance covers two service events each year. A \$49 fee may apply. For full details on the insurance, please see this [AppleCare+ resource](#).

<b>Price</b>	\$544.00 iPad Air, M1 wifi model \$159.95 Logitech Keyboard w/trackpad \$109.00 4-year AppleCare+ Insurance \$119.00 Apple Pencil (2nd gen)
<b>Screen</b>	10.9"
<b>Battery Life</b>	Up to 10 hours
<b>Camera</b>	Video and photo
<b>Ports</b>	USB-C connector
<b>Operating System</b>	iPadOS
<b>Storage Space</b>	64GB

## Why iPad Air M1?

The iPad Air M1 with Logitech keyboard and Apple pencil provide students with a high-powered device that has all the capabilities of a laptop while adding interactive (touchscreen) and creative (camera) capabilities not found on traditional laptops.

For more on the advantages of Apple educational services, see page 10.

# Family Investment & Student Ownership

With a competitive price, 0% interest rate, and up to 4 years of payments, this is a great educational investment!

The NPS package includes:

- iPad Air M1 at an educational discount
- Logitech keyboard case with trackpad
- Apple Pencil at an educational discount
- Four years of AppleCare+ at a significantly discounted rate
- On-site technical support at NHS
- Up to 4-year payment plan

We encourage every family to participate in this innovative educational program! We understand that some families may have already purchased a device; there are options for all students:

1. Participate in the Lease-to-Own Program
2. Bring your own device\*
3. Use a daily loaner device in school as needed

## Lease-to-Own Advantages

Student-owned devices lead to a significant decrease in district repair and device replacement costs. When students own the device, they take responsibility and learn to personalize it for their own needs.

Parents/guardians from lease-to-own districts shared that their student's Apple devices have been used well into college. **For more on iPad use at the higher education level explore these sites:**

- [Bowdoin College iPad Initiative](#)
- [University of Kentucky iPad Initiative](#)
- [Higher Education Professor Use \(from Apple\)](#)



## Lease Program Options

Student Year of Graduation	Lease Option (0% interest rate)
2025	One year lease, Three payments of \$310.65
2026	Two year lease, Four payments of \$233.00
2027	Three year lease, Six payments of \$155.50
2028	Four Year lease, Eight payments of \$116.50

\* Student owned devices are not be supported by the NPS technology department. All necessary software and apps will be provided. The device should meet the following requirements:

- ✓ Able to run the most recent version of Google Chrome
- ✓ Wireless network capable (5ghz wireless AC or newer)
- ✓ 10" or greater screen size
- ✓ Full size keyboard

# Scholarship Support

Our goal is for every student to participate in the program and make sure every student/family will have a pathway to invest in a device that is their own.

Three levels of need-based scholarships will be awarded annually. Need will be calculated based on the annual [USDA Child Nutrition Programs Income Eligibility Guidelines](#). See the [NHS Technology](#) webpage for a full overview.

Scholarship applications will be reviewed and approved by the business office annually. Questions can be addressed to [scholarship@newburyport.k12.ma.us](mailto:scholarship@newburyport.k12.ma.us)

**Scholarship applications are due by May 17, 2024.**

MATH 145 — WEEK 7 OCT. 18

9:41 AM Tue Oct 18 100%

24" 8" 16" 12" 17" 15" 20" 18" ?

1. THIS CHAIR MAY LOOK A LITTLE STRANGE, BUT ITS CYLINDRICAL CONSTRUCTION IS SURPRISINGLY COMFORTABLE. CALCULATE THE VOLUME OF EACH OF THE 3 CYLINDERS USING THE MEASUREMENTS ABOVE.

2. THIS CHAIR'S SWEEPING LEG DESIGN MAKES IT BOTH BEAUTIFUL AND FUNCTIONAL. CALCULATE THE ANGLE AT WHICH THE LEGS: A) INTERSECT; B) MEET THE FLOOR.

3. THIS CHAIR'S BACK WAS CONSTRUCTED AT AN OPTIMAL ANGLE FOR RECLINING ERGONOMICALLY. CALCULATE THE OPTIMAL ANGLE BASED ON THIS SKETCH.

Three Levels of Scholarship	Percent of Annual Payment Subsidized
3	60% paid by scholarship, 40% paid by family
2	40% paid by scholarship, 60% paid by family
1	20% paid by scholarship, 80% paid by family

# Frequently Asked Questions

What if our family does not choose to participate in the lease-to-own?

We encourage every family to invest in the iPad Air package. We recognize that some families may already have invested in a device. There are three options for students:

1. Participate in the Lease-to-Own Program
2. Bring your own device (devices will not be supported by NPS tech and must meet certain requirements)
3. Use a loaner device in class as needed. Every classroom will have iPad devices available for student use.

---

When do we need to sign up?

Enrollment will take place in the April 23- May 17, 2024. The first payment is due before delivery of device.

---

How will the devices be serviced?

The NPS Technology Team will manage support for all leased devices. Students will be able to drop their devices off in the Tech Office.

---

What does AppleCare+ Insurance cover?

We encourage you to read the full [AppleCare+ documentation](#). AppleCare+ covers two incidents of accidental damage per device per year for a \$49 service fee. Students participating in the lease-to-own program will have access to support from the NPS Technology Team.

---

What are the "bring your own device" requirements?

Please note the NPS Tech department will **not** service devices outside of the lease program. Student BYOD devices should meet the following requirements:

- Able to run the most recent version of Google Chrome
- Wireless network capable (5ghz wireless AC or newer)
- 10" or greater screen size
- Full size keyboard

---

How is the cost of this package different than if I purchased at an Apple Store?

The retail price for the iPad Air 64GB is \$599. Through the 'Shop for College' store the price is \$549 but this is only available to college students. The school district is offering the device for \$544. The retail price AppleCare+ on the iPad Air is \$79 and only covers 2 years (\$39.50/year). The school district is offering 4-year coverage for \$109 (\$27.25/year). 4-year coverage is not available through the Store.

All families will qualify for our lease-to-own program guaranteed at 0%.

Can a family decide to join the program any year?	Yes. Enrollment will take place once a year. Lease payments will reflect the number of years your student has left at NHS.
How do I sign up?	Sign up through the Newburyport MySchoolBucks store.
What software and apps will be provided by the school?	All apps and software used by the school will be provided free of charge.
Will NHS continue to use Google Workspace for Education?	Yes. Teachers will continue to use Google Classroom and students will have access to the full Google Educational suite.
How will NHS manage what is on each device?	Although the device will be managed by NPS, we want students to see this device as their own educational tool and learn to use it to enhance their learning experience. Students will be able to add apps and software of their choosing. If they choose, families can opt into a more restricted management plan.
How will NHS ensure appropriate use of technology during the school day?	All NHS students are responsible for abiding by the standards of conduct outlined in the Clipper Compass.  The NHS technology team ensures all district devices are COPPA and CIPA compliant.
What management tools do the teachers have?	Using Apple Classroom, teachers can temporarily see student screens and lock in apps. Apple Classroom also allows a teacher to share documents and communicate with students to help them stay on task.
Did NHS consider other Apple devices like the MacBook Air?	Yes. Early research included both PC and Apple devices. Once the decision was made to go with an Apple device, both iPads and MacBooks were considered. The iPad Air M1 with a keyboard can do much of what students currently do on a laptop while adding functionality (e.g. Apple Pencil, more flexible cameras, accessibility features) to allow students and teachers to approach teaching, learning and creating in new ways.
What if I miss the sign-up period?	Due to ordering timelines, we cannot accept orders after the closing date. You can choose to join the program the following year.

## What is the plan for teacher professional development?

Since 2019 teams of NHS educators and administrators have been involved in piloting and researching 1:1 devices.

NHS math and integrated arts teachers started using iPads in 2019. In addition, staff from the history and science departments have participated in semester-long iPad Pro professional development programs. This team of “super users” are excited to expand the use of iPads to students and will support the growth and development of their colleagues.

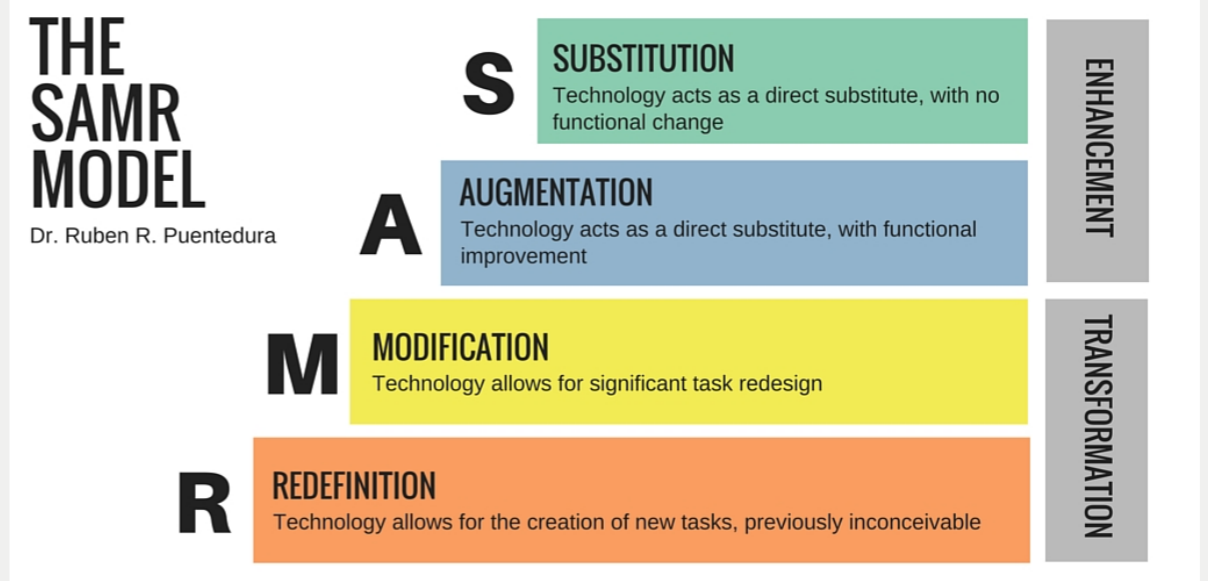
In FY24 NHS added a full-time technology integrator. Integrators provide ongoing professional development, personalized coaching and direct instruction. This model allows our teachers to grow and learn as technology changes.

The district will continue to work with our Apple Professional Learning team to create customized opportunities for teachers and to support all educators in using the excellent Apple Teacher resources.

The adoption of any new technology takes time. We expect teachers and students will find many unexpected and creative uses for the iPads. We are excited about the work our integrated arts, math and science teachers are already doing with the iPad. The SAMR model offers a nice visual for how we expect teachers and students to change the way they are teaching and learning over time.

*The SAMR model illustrates how students and educators change the way they are teaching and learning over time.*

<https://www.edutopia.org/article/powerful-model-understanding-good-tech-integration/>





# Why a 1:1 Program?

**Access to a reliable and flexible computer is essential for advanced learning. With the iPad Air M1, NHS students will have a device that can grow with them.**

**Equity:** A 1:1 program guarantees that every student has access to a reliable and agile portable device.

**Uniformity:** By focusing on a single platform, educators can innovate with technology knowing that our systems will support their creativity and our students will be able to access their lessons. Students will have access to onsite technology support for their hardware and software needs.

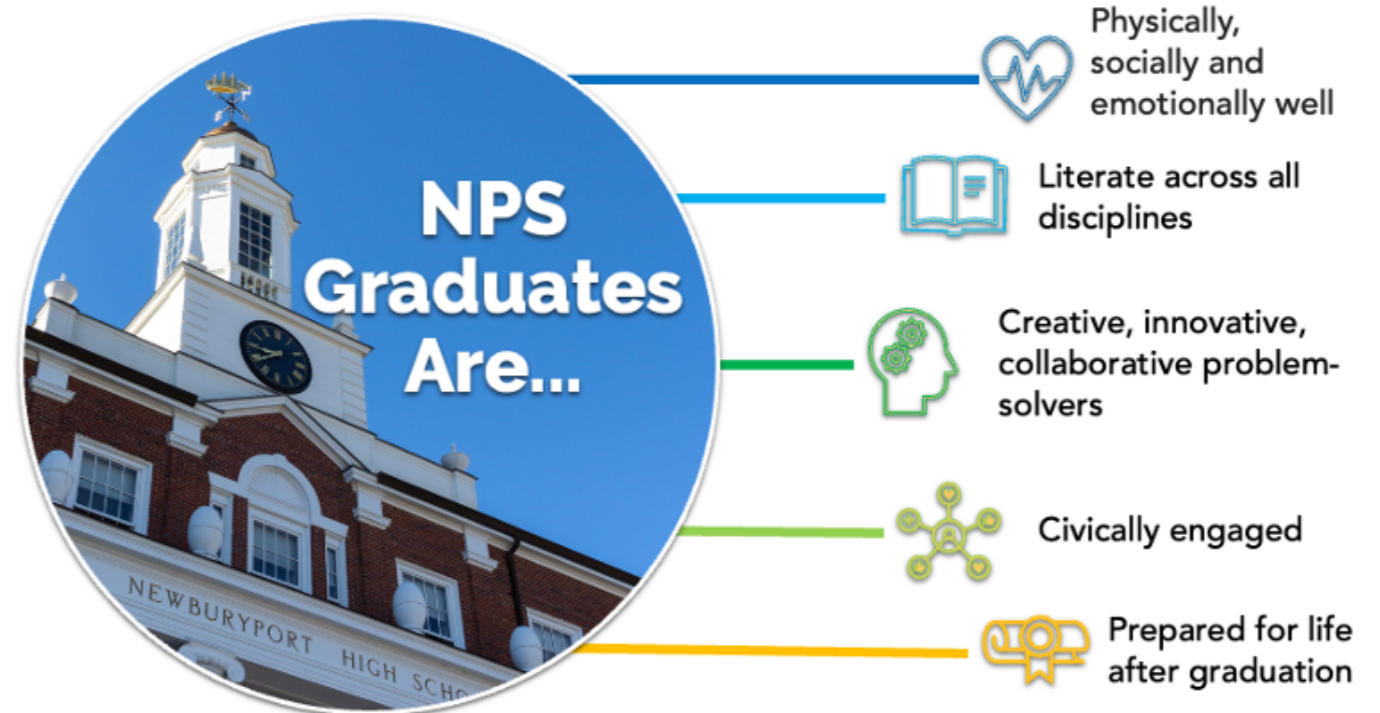
**Creativity:** Every day, our students personalize, create and explore using their own devices. The NHS 1:1 program provides a device that will support this same level of innovation and personalization in every classroom. In addition, the iPad provides every student with built in features that allow them to communicate, create, and connect in a multi-media environment.

**Accessibility:** The iPad's extensive accessibility features provide every student with universal tools to personalize and organize their learning.

**Learning Beyond the Classroom Walls:** With their own device, every student will be able to continue their learning and creating from home, at the library, or even in the field.

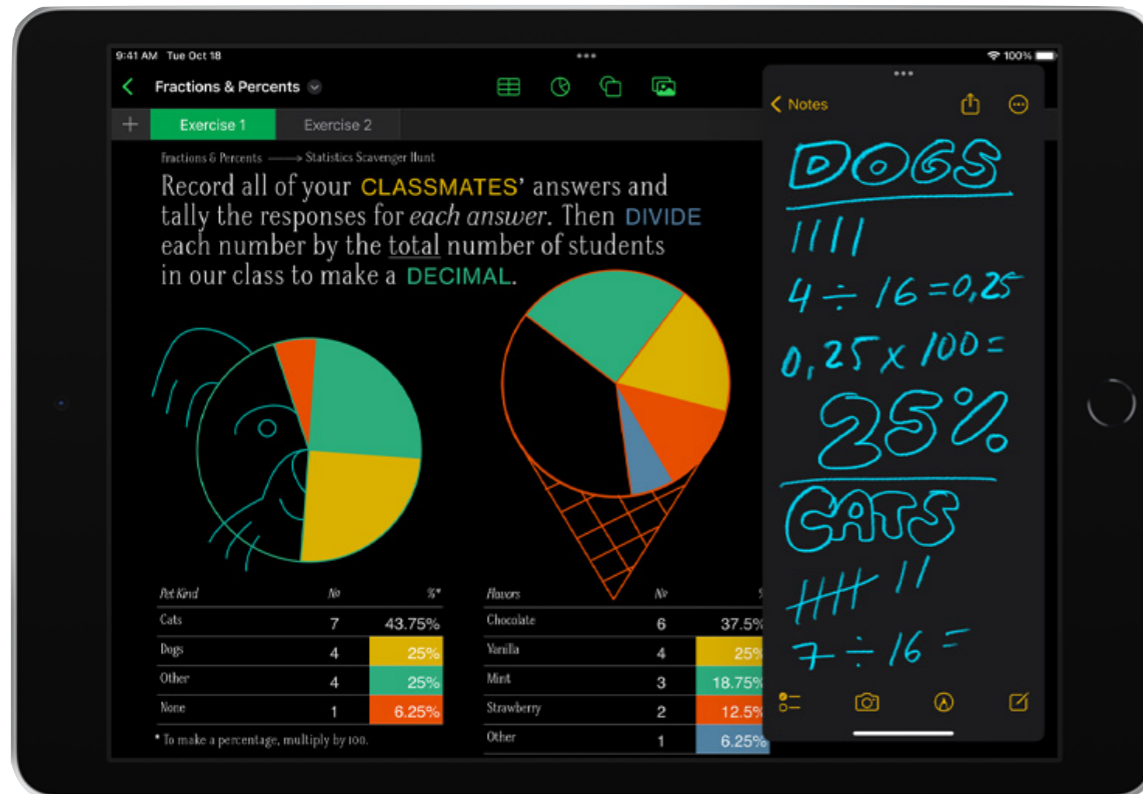
**Innovation:** The iPad is a flexible and agile device that will allow our teachers and students to “reimagine teaching and learning.” From online assessments to multimedia research and creation, with every student on an iPad Air, we will move forward in our goal of creating a rigorous and engaging education experience at NHS.

**Meeting our Portrait of a Graduate Vision:** A 1:1 program will make sure every student and every educator has the tools to prepare NHS graduates for their future and meet our Portrait of a Graduate goals.



# Why Apple?

Apple has a long history of supporting educational success.



iPad. **Portable.** Powerful.  
Packed with potential.

## Educational Visioning and Planning

Customized planning encompasses educational visioning, educator professional development, Apple school networking, and device purchase and management solutions.

## Instructional Coaching

- Dedicated Apple Professional Learning Consultants
- Apple Learning Programs for Educators
- [Apple Education Community](#) with Online PD Courses and Certifications
- Customized on site consultation

## Accessibility Features

Built in features allow for a customizable interaction with content. From reading to creating this device supports all types of learners.

## Device Management

- Dedicated Apple systems engineer
- AppleCare Support
- Logistics, management and security systems

## Total Cost of Ownership

- Break fix costs
- Trade in value
- App purchasing through Apple School Manager
- Sustainable Engineering